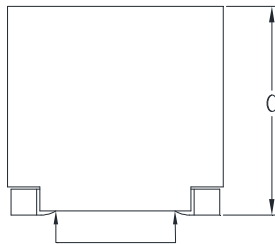
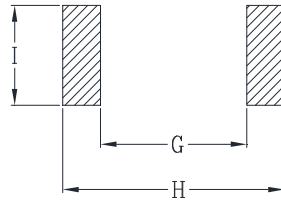
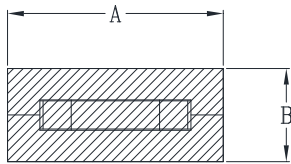


CYNTEC CO., LTD.

乾坤科技股份有限公司

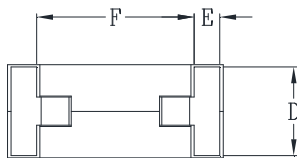
HCME104610F Series

Mechanical Dimensions



Suggested PWB Layout

DCR Measure Points



UNIT : mm

A = 9.9±0.3

B = 4.3±0.3

C = 9.7±0.3

D = 4.1±0.3

E = 1.25±0.3

F = 7.3±0.5

G = 6.8

H = 10.9

I = 4.7

Electrical Characteristics @ 25°C, 100kHz, 1V

Delta P/N	L (nH) ± 15%	Li (nH) MIN	DCR (mΩ) ± 10%	Isat ¹ (A)			Ir ² (A)
				25°C	100°C	125°C	
HCME104610F-700	70	50	0.23	141	120	113	70
HCME104610F-900	90	65		109	93	87	
HCME104610F-101	100	72		98	83	78	
HCME104610F-121	120	86		82	70	66	
HCME104610F-151	150	108		65	55	52	

1. Isat is the DC current which causes the inductance drop to Li.
2. Ir is the DC current which causes the surface temperature of the part increase approximately 40 °C.
3. Operating temperature: -40°C to 125°C (Self-temperature rise included).